



New Zealand  
**College of Midwives**  
TE KĀRETI O NGĀ KAIWHAKAWHANAU KI AOTEAROA

2021 ŌTAUTAHĪ  
*Christchurch*  
Conference



16TH BIENNIAL  
NATIONAL CONFERENCE

CONFERENCE DAYS

***Friday 05 – Saturday 06 November***

OPENING EVENT

***Thursday 04 November***

Mihi whakatau and Welcome Function from 5.00pm

**Early bird  
registration  
closes  
17 September**

CELEBRATING DIVERSITY  
growing  
stronger  
together

*Te Pae,  
Christchurch  
Convention Centre  
04 - 06 November 2021*

[midwife.org.nz/conference-2021](http://midwife.org.nz/conference-2021)

# Nau mai haere mai

Come celebrate, collaborate and chat with your midwifery colleagues.

Time and time again, we receive feedback that sharing of knowledge and practice, networking and the intangibles that conference provides, is as valuable as the professional development aspects.

Our programme, showcases a diverse range of speakers, incorporating our conference theme **Celebrating Diversity - Growing stronger together.**

The panel discussions are designed to stimulate discussion and debate among multiple stakeholders and viewpoints.

In response to feedback we are excited to announce a change to the concurrent session format. Shorter presentations across two rooms will enable delegates to attend more presentations than before and to hear the breadth of midwifery knowledge, research and experience. See the programme for more details.

It has been over a decade since our biennial conference has been held in the South Island. Our conference is to be held within Te Pae Christchurch Convention Centre. This world class convention centre is centrally located, positioned across from the Avon river and Victoria Square. We encourage delegates to explore Ōtautahi Christchurch at its spring time best.

Registrations are now open and we have set out an optional instalment plan to help spread the cost of conference. We encourage you to book early and make the most of the early bird fee.

Ngā mihi nui



A handwritten signature in black ink.

**Nicole Pihema**  
PRESIDENT



A handwritten signature in black ink.

**Alison Eddy**  
CHIEF EXECUTIVE

**New Zealand College of Midwives | Te Kāreti o ngā Kaiwhakawhānau ki Aotearoa**

# Message from our Kuia

**Crete  
Cherrington**



E ngā mana, e ngā reo o te motu, tēnā rā tātou katoa  
Ngā maunga whakahii, ngā puke kōrero, nei rā te mihi rangatira kia koutou.  
E ngā mate o te motu, haere atu rā, haere Kia rātou mā kua wheturangitia.  
Moe mai I to moengaroa  
Ka huri ki ngā kanohi ora, tēnā rā tātou katoa

Kua tae te wā, me karawhiu ngā pukenga, ngā mātauranga ki te ao. Nau mai  
haere mai ki tēnei hui mō ngā kai whakawhānau pēpi ki Aotearoa 2021.  
Whakatau mai rā I runga I ngā kaupapa I whārikihia nei I mua ia tātou te rā nei.  
Kii pai ngā mahi puta mai I te ao.  
Ko te tūmanako kia pai tō noho ki waenganui I a mātou.

“Kua tawhiti kē tō haerenga mai, kia kore e haere tonu. He nui rawa ō mahi, kia  
kore e mahi tonu”

“You have come too far not to go further, you have done too much not to do more”

Tā Himi Henare

Ngatihine

Nō reira, e ngā hau e whā, tēnā koutou, tēnā koutou, tēnā koutou katoa

## Conference Theme



Our conference theme brings together the concept of **diversity with strength and growth**. Women and midwives are individuals, with diverse beliefs and expectations relating to culture, ethnicity and spirituality. By recognising, understanding and celebrating these differences we can become stronger as we work together.

As part of our planning and preparation for this conference, the New Zealand College of Midwives are committed to ensuring that all necessary health and safety precautions are taken, both in the lead up to our conference and onsite at the conference. These precautions and any changes will be clearly communicated to all delegates before and during the conference.

Thank you again, stay safe and we look forward to hosting you in November, in Ōtautahi Christchurch for what will be a fantastic conference to finish out the year.

# Keynote Speakers

## Milli Hill

(VIRTUALLY)



**Milli Hill** is a journalist, author and the founder of the Positive Birth Movement. Her first book, *The Positive Birth Book*, was published in March 2017 to wide acclaim, immediately becoming an Amazon bestseller and remaining one of the most popular books for pregnant women ever since.

In August 2019 her second book, *Give Birth Like a Feminist*, was published by Harper Collins and has since been widely featured in the UK media including the BBC. The book seeks to spark debate about childbirth as an overlooked feminist issue, and urges women to reclaim their bodily autonomy in birth in line with the #metoo movement.



In June 2021 her third book, *My Period, a guide for pre-teen girls* will be published by Hachette. This book seeks to give young women positive messages about the power of their female bodies, long before they think about motherhood. Milli lives in Somerset, UK with her partner and three children.

## Prof Suzanne Pitama



**Professor Suzanne Pitama** (Ngāti Kahungunu) PhD (Otago) PGDipEdPsych, MA (First Class Hons). Suzanne is the Hauora Māori Discipline lead of the Otago Medical School, Associate Dean Māori, Christchurch campus, and Co-Director of a University of Otago Research theme: Te Poutama Ara Rau.

Suzanne is a registered educational psychologist and has been involved in Māori health research and health education for 20 years. Suzanne is focussed on addressing Māori health inequities through medical education, health research and through membership on appropriate committees and boards, which include the HRC Board and as a Director on the Australia Medical Council Ltd. Suzanne has received a number of awards for her teaching including the Prime Minister's Supreme Award for tertiary teaching excellence and the Indigenous Leadership Award from the Leaders in Indigenous Medical Education (Australasian) community of practice. Suzanne was awarded the Joan Metge Medal for her research within the field of Indigenous medical education.

# Keynote Speakers

**Dr Johan Morreau**



**Dr Johan Morreau** has been a child health medical specialist (paediatrician) in Rotorua, since late 1983. In July 2018 he retired from active clinical practice, but remains active in a Child Health Advisory and Advocacy capacity and as an elected Board member of the Lakes DHB. His TED talk 2016 gives focus to this advocacy. <https://youtu.be/K1sIVo3BNtM>

Johan was the Chief Medical Officer for Lakes District Health Board for 11 years and held a range of senior medical leadership roles including terms as both the NZ Chairman of the Child Health Division and NZ President of the Royal College of Physicians (RACP). This experience has enabled understanding of the direct linkage between government policy, the structures, culture and focus of the services being delivered, and how these impact the health of children and young people in Aotearoa.

**Dr Hana O'Regan**



**Dr Hana O'Regan** has worked in the areas of language revitalisation, identity and cultural development, te reo Māori and education for over 25 years. Hana is a published author and composer and is recognised internationally for her work in indigenous language acquisition and revitalisation. A graduate of Te Panekiretanga - Institute of Excellence in Te Reo Māori, Hana is widely respected for her Māori language contribution, skills and advocacy. Hana's passion for education and community, history and equity has resulted in a career committed to working with organisations, businesses and individuals to support and enhance positive outcomes for learners and whānau.

In 2006 Hana took up the role of General Manager, Oraka for Te Rūnanga o Ngāi Tahu where she managed the portfolios of Education, Tertiary Education and Employment Transition, Health and Wellbeing, Tribal Economies, Iwi Capability and the Whai Rawa Iwi Superannuation scheme. Prior to working at Ngāi Tahu Hana held two director positions on the senior executive at ARA Institute of Canterbury as the Kaiārahi -Director Māori and Pasifika, and the Director for the Student Services Division which oversaw the areas of Student Academic Support, Student Transitions, our Student Wellbeing portfolio, the Centre for Māori and Pasifika Achievement and the Youth Transitions stream.

Hana has held many positions on national boards, review panels and committees across the areas of education, Māori development, national identity, Treaty rights and policies and health.

# Opening Address

## Hon Dr Ayesha Verrall



Hon Dr Ayesha Verrall is the Associate Minister of Health, with delegated responsibilities including maternity, women's health, public health, communicable diseases, and tobacco control. She is also Minister for Seniors, Minister for Food Safety, and Associate Minister of Research, Science and Innovation.

Dr Verrall was one of the experts influential in developing New Zealand's COVID-19 elimination strategy. She became a household name in New Zealand after her rapid audit of the country's COVID-19 contact tracing system led to significant improvements being implemented by the Ministry of Health.

Prior to entering politics, Dr Verrall was an infectious diseases physician and a senior lecturer at the University of Otago. In 2013, she ran the large INFECT study in Bandung Indonesia. Her work revealed the effectiveness of BCG vaccine in preventing Tuberculosis transmission, and how the Beijing lineage of *M. tuberculosis* may evade this protection. Following this work, Dr Verrall chaired New Zealand's Tuberculosis Guidelines Writing Group. The guidelines cover clinical management, laboratory management, contact tracing and prevention.

She also practiced at Capital and Coast District Health Board as a consultant, and in 2019 was elected Deputy Chair of the Hospital's Board. As an expert on vaccines, Dr Verrall was a member of PHARMAC and the Ministry of Health's technical advisory committee on immunisations.

Dr Verrall completed her clinical fellowship at the National University Hospital Singapore and is a Fellow of the Royal Australasian College of Physicians.

Dr Verrall lives in Wellington, with her partner and daughter.

**Early bird  
registration  
closes  
17 September**



# Joan Donley Memorial Address

**Karen  
Guilliland**



**Karen Guilliland** is the former Chief Executive of the New Zealand College of Midwives with 50 years' midwifery and nursing experience across the health sector. She was Deputy Chair of the Health Workforce Advisory Committee, a Board member of Pharmac and the New Zealand Health Strategy Reference group in 2000 which drafted the Health and Primary Care Strategies. She is currently on the Board of the Federation of Primary Health Aotearoa.

Karen was a member of the International Confederation of Midwives (ICM) Board for twenty years, chaired the ICM Scientific Planning and Programming Committee and remains a current member while co-chairing the ICM Regulation Standing Committee.

Karen co-authored "The Midwifery Partnership; A Model for Practice" and "Women's Business: The History of the NZ College of Midwives" and is the author of numerous published papers, articles and books.

Karen was awarded the Member of the New Zealand Order of Merit (MNZM) for Services to New Zealand in midwifery and women's health in 2000. From 2015 she led the High Court action and subsequent mediation on Pay Equity in 2018 on behalf of the New Zealand College of Midwives.

**Joan Donley**



**Joan Donley** (1916 - 2005) was a key visionary when it came to birth and midwifery in New Zealand. Her tireless work led in no small part to the system we have now. Prior to the Nurses Amendment Act 1990, Joan felt that the role of the midwife had been undermined and could vanish altogether if not protected. In 1985 she published *Save the Midwife* (New Women's Press), which charted the history of the profession and placed midwifery in New Zealand within the political sphere.

In 1989 she played a key role in the establishment of the New Zealand College of Midwives. In the same year she was made an OBE in for her work in birth advocacy and midwifery.

Her work placed New Zealand midwifery in a position to be a world leading system. These successes were a result of tireless work and lobbying. As we reflect on these past challenges, we also need to look forward, with Joan's vision in mind.

*Source: Home Birth Aotearoa*

# Programme

## *Thursday 04 November*

### OPENING EVENING

We would like to encourage you to plan your arrival in Ōtautahi Christchurch prior to the mihi whakatau so that involvement in all the national conference activities is maximised.

#### **5.00pm MIHI WHAKATAU**

The very first part of our Conference is the mihi whakatau – the mihi whakatau is a welcome ceremony by tangata whenua that draws everyone together in the opening of the conference.

#### **5.45pm WELCOME FUNCTION**

Following the mihi whakatau, delegates are welcomed into the exhibition area, for the opportunity to relax, chat with colleagues, meet new people, while viewing the exhibits.

#### **7.00pm NEW ZEALAND COLLEGE OF MIDWIVES AGM**

The New Zealand College of Midwives welcomes College members to attend their Annual General Meeting. Please indicate your attendance on the online registration form.

### OUR PROGRAMME INCORPORATES

#### **Plenary**

National and international speakers provide important insights into differing aspects of midwifery.

#### **Panel discussions**

The conference programme incorporates panel discussions to provide differing viewpoints and debate. Each speaker is allocated time to present, followed by questions and participation from the audience, at the end of the session.

#### **Workshops**

Workshops that will run at the same time as the concurrent sessions. Places will be limited, so please register early to secure a space.

#### **Concurrent sessions**

Concurrent sessions allow delegates the opportunity to choose topics which they personally wish to listen to. All presenters submitted abstracts, which were read and blind reviewed by the Programme Committee, before being selected and placed into the programme.



# Programme

Instalment  
registration  
payment plan  
closes  
Friday 20 July

## Friday 05 November

### DAY ONE

8.30am Welcome

9.00am Give birth like a feminist **Milli Hill**

9.45am Supporting mother's ora / wellbeing **Dr Hana O'Regan**

10.30am Morning tea amongst the exhibitors, along with poster presentations

11.00am Hauora Māori competence within midwifery **Prof Suzanne Pitama**

Behind the scenes of *My Māori Midwife*

11.45am Panel discussion: This popular TV show has raised understanding and awareness nationally of the work of Māori midwives. This panel will explore the midwives experiences of being part of the programme and the impact the programme has had on them and their midwifery practice.

12.45pm Lunch amongst the exhibitors, along with poster presentations

1.30pm - 3.00pm **WORKSHOPS** 90 minutes. Places will be limited, so please book early to secure a space.

W1

TUIA Returning the sacred weave into the birthing space **Jacqueline Martin**

W2

The practicalities, the people and the partnership: The National Perinatal Pathology Service **Kay Jones**, Ainslee Jacobsen, Ross Hewitt

W3

Midwives in shift-based clinical leadership roles: Associate Charge Midwife Managers (ACMM) / Clinical Midwife Coordinators (CMM) **Claire MacDonald**

1.30pm

**CONCURRENT SESSION A1**

**CONCURRENT SESSION A2**

Am I a leader? The state of the midwifery leadership in the public hospital setting in New Zealand through the lenses of leader identity, self-efficacy, and shared leadership **Karen Ferraccioli**

Minding the gap: Maternal inequity in a wellbeing state **Pauline Dawson**, Chrys Jaye, Robin Gauld, Jean Hay-Smith

How do midwives and obstetricians communicate at the primary secondary interface? **Rachel Cassie**, Christine Griffiths, George Parker, Jean Patterson

Working through complexity: How women living in areas of high socioeconomic deprivation in New Zealand access and engage with midwives **Christine Griffiths**, Judith McAra-Couper, Barbara McKenzie-Green

The midwife as social connector **Lorna Davies**, Susan Crowther

Bearing witness - Midwives' accounts of disadvantaged mothers **Eva Neely**, Briony Raven, Lesley Dixon, Carol Bartle

The mentoring relationship: Valuing the mentor's role **Mary Kensington**, Shanti Daellenbach, Lesley Dixon, Elaine Gray, Christine Griffiths, Nicole Pihema, Jean Te Huia

Community partnership to address inequity **Norma Campbell**

Concurrent session A: Questions and answers

# Programme

## Friday 05 November contd.

### DAY ONE

**2.10pm** Move to the next concurrent session

**2.15pm**

#### CONCURRENT SESSION **B1**

In good hands: Understanding and affirming LMC midwives' practices of foetal growth assessment **Sheryl Morris**, George Parker, Karen Wakelin, Jean Patterson

Personal use of hand-held fetal heart rate doppler monitors by pregnant women in New Zealand **Lyndal Honeyman**, Robyn Maude

The paradox of contemporary midwifery practice: Promoting an out-of-hospital birth setting **Bronwyn Torrance**

Do we need post birth care plans when there is continuity of midwifery carer? Insights from a UK based study **Susan Crowther**

#### CONCURRENT SESSION **B2**

Continuity of midwifery care in complexity: A qualitative description **Eleanor Martin**

Continuity of care: An analysis of care providers' outlook on women's experiences of unplanned/emergency caesarean section within New Zealand maternity system **Charles Egwuba**, Annabel Ahuriri-Driscoll, Sarah Lovell

Doing time: The experience for women hospitalised for an extended time in their pregnancy **Michele Lomax**

Water immersion in complex pregnancy **Kelly Kara**, Suzanne Miller

#### Concurrent session B: Questions and answers

**3.00pm** Afternoon tea amongst the exhibitors, along with poster presentations

**3.30pm** Joan Donley Memorial Address **Karen Guilliland**

#### Meeting the needs of diverse communities'

**4.00pm** Panel discussion: This panel will discuss the differing needs of women from diverse backgrounds and consider how the NZ midwifery model of care can meet the needs of diverse communities.

#### Fuelling the flame for midwifery

**5.00pm** Students from each undergraduate school have been invited to reflect on what they have learnt during their undergraduate programme and what they will bring to midwifery as the new generation of midwives to join our profession?

**7.00pm** Conference dinner

# Programme

Early bird  
registration  
closes  
17 September

## Saturday 06 November

### DAY TWO

**8.30am** Future proofing the profession – A discussion about the Aotearoa Midwife project

**9.00am** Midwifery care and the baby's first 1000 days **Dr Johan Morreau**

#### Protecting women and babies – The role of the midwife

Panel discussion: Keeping women and babies safe is integral to the midwives role, but care and protection issues can be challenging for midwives as they seek to ensure that women, and their families, are provided with the necessary support to keep them safe. This panel will discuss and explore issues and concerns related to the care and protection of women and babies within maternity.

**9.30am**

**10.30am** Morning tea amongst the exhibitors, along with poster presentations

**11.00am – 12.30pm** **WORKSHOPS** 90 minutes. Places will be limited, so please book early to secure a space.

**W4**

The influence of history on contemporary issues for hospital midwives  
**Caroline Conroy, Jill Ovens**

**W5**

Tools for undertaking perinatal mental health assessment, support and referral  
**Clare Barnett**

**W6**

Spirituality and childbirth: A co-operative inquiry  
**Susan Crowther**

**11.00am**

#### CONCURRENT SESSION **C1**

What factors enabled Pasifika midwives to successfully complete their undergraduate degree? **Talei Jackson,** Karen Wakelin, George Parker

The use of virtual reality as a teaching modality in midwifery education  
**Melanie Welfare**

Prebrief or debrief? Using simulation in collaborative midwifery and medical education **Rea Daellenbach, Lorna Davies,** Maggie Meeks, Judy Ormandy, Melanie Welfare

Just relax! But how?  
**Carrie Cornsweet Barber**

#### CONCURRENT SESSION **C2**

Management of prolonged prelabour rupture of membranes at term: Findings and discussion from a clinical notes review  
**Rebecca Hay, Robyn Maude, Susan Calvert**

Midwives are key in recognising neonatal encephalopathy: Do you know what to look for? **Julie Richards, Robin Cronin**

A conservative approach to deformational plagiocephaly **Dipal Patel**

The voice of women – Women's perspective of their midwifery care through a Midwifery Quality Assurance program **Jacqui Anderson,** Lesley Dixon, Sarah Lockwood, Shanti Daellenbach, Ariana Nisa-Waller, Eva Neely

Concurrent session C: Questions and answers

# Programme

## Saturday 06 November contd.

### DAY TWO

**11.45am** Move to the next concurrent session

11.50am	CONCURRENT SESSION <b>D1</b>	CONCURRENT SESSION <b>D2</b>
	Vaginal seeding - The ECOBAbE study and latest international findings <b>Celia Grigg</b>	Transgender pregnancy in Aotearoa New Zealand - A first-hand experience <b>Scout Barbour-Evans, Fiona Heares</b>
	Timing of cord clamping (TOCC): An observational study of cord clamping practice in a New Zealand maternity hospital <b>Tina Hewitt</b>	Migrant Kiribati women and birth in New Zealand <b>Kathy Carter-Lee</b>
	A heavy heart and a pocket full of grief: An interpretive inquiry of midwives' first experiences of stillbirth as a community based midwife <b>Kay Jones</b>	Evaluation of the 'Sleep on Side' NZ public health awareness campaign <b>Robin Cronin</b>
	The observational study of current practice of postpartum anaemia <b>Esther Calje, Katie Groom, Frank Bloomfield, Charlotte Oyston, Joy Marriott, Lesley Dixon</b>	Reframing maternal health promotion - A holistic health model for midwifery <b>Eva Neely, George Parker, Susan Knox</b>
	Concurrent session D: Questions and answers	
<b>12.30pm</b>	Lunch amongst the exhibitors, along with poster presentations	
<b>1.30pm</b>	<b>Caring for women during labour</b> Panel discussion: By integrating research and clinical knowledge this panel will explore how midwives from all work settings can support women with complex needs towards a positive birth experience.	
<b>2.15pm</b>	<b>Kaupapa birthing in the birthing room</b> Panel discussion: An increasing number of whānau are choosing to intergrate kaupapa Māori practices into their hapū experience. It is important that as kaiwhakawhanau/tapuhi we have an understanding of the intent and tikanga so we can safely support whānau choosing to include this aspect of hauora. This panel explores kaupapa Māori birthing practices, and discusses tikanga to keep whānau safe, and how midwives are vital to the protection of these practices.	
<b>3.00pm</b>	Afternoon tea amongst the exhibitors, along with poster presentations	
<b>3.30pm</b>	Looking to the future - What does the Health and Disability Review mean for midwives?	
<b>4.15pm</b>	Midwifery equity - Are we there yet? <b>Jill Ovens and Alison Eddy</b>	
<b>4.45pm</b>	Closing remarks	
<b>5.00pm</b>	Conference concludes	

# Posters

*Posters can be read within the spaces of the exhibition and day catering area*

Does continuity of midwifery care improve outcomes for the neonates of vulnerable women? **Alisha Aravena, Tiffany Henry**

Does work setting impact on midwifery burnout? **Nic Rankin, Janaya Coxon-Smith**

Drinking or smoking while breastfeeding: Does it impact the child? **Louisa Gibson, Melanie Porter**

Maternal and fetal medicine; A new way forward for women and midwives **Lisa Mctavish, Judy Graham**

Maternal blood optimisation: A practice improvement strategy **Esther Calje, Ruth Hughes, Daniel Mattingley, Ben McLaughlin, Richard Seigne**

One in three women **Janet Thackray**

Small but pivotal: Hepatitis B and pregnancy **Diane Hanna**

Supporting midwives to support women – Advocating for professional supervision **Amanda Rouse**

Teaching intact cord resuscitation **Tina Hewitt**

What are women's views and attitudes towards vaccination in pregnancy? **Corinna Gibbons-Lawrie, Annelies Zwaan**

Why chiropractic is a wonderful tool during pregnancy: A closer look to the Webster Technique **Virginie Desjardins**

A gallery of Capturing Life - Photo + film, birth images will be on display for delegates to view within the exhibition and catering area.





# Social Programme

**THURSDAY 04 NOVEMBER 5.45PM**

## Welcome Function

Start the conference by joining us for a glass of wine, canapes and a chance to chat with midwifery colleagues, meet new people and mingle with sponsors and exhibitors.

### Te Pae Christchurch Convention Centre

*One ticket is included in each full registration. Additional tickets may be purchased for \$35.00 per person*

**FRIDAY 05 NOVEMBER 7.00PM**

## Conference Dinner

The conference dinner is a highlight for those attending the conference. A chance to relax, have fun, enjoy a superb meal and dance the night away, while overlooking the Avon River.

### Te Pae Christchurch Convention Centre

*\$87.00 per person, including a welcome drink. Remaining beverages to be purchased at your own cost.*





# Venue

## Te Pae Christchurch Convention Centre

The venue for the conference is Te Pae Christchurch Convention Centre.

Te Pae Christchurch, is the world-class purpose built convention centre, centrally located in the city (within easy walking distance to accommodation options). This venue opens to the river and a central city park enabling appreciation and connection with the natural environment.





# Destination

## Join us in Ōtautahi Christchurch

Ōtautahi Christchurch, a revitalised city in the heart of Aotearoa New Zealand's beautiful South Island. You will discover award-winning architecture, inspiring public art, restored heritage venues and brand new spaces set amongst beautiful parks and gardens.





# Conference inclusions

## Tram

All full conference registrations receive a complimentary tram ticket for the duration of the conference. Allowing delegates to hop-on hop-off to ride to your accommodation or visit the central city sights at your leisure.

Explore the best of the central city from the 17 stops enroute: the Canterbury Museum & Botanic Gardens, Turanga and Margaret Mahy Playground and the many retail stores, bars and eateries at The Terrace, Cashel Street & Riverside Market, Arts Centre and New Regent Street offer fantastic shopping and dining options.

Tram stop #16 is outside of Te Pae Christchurch Convention Centre.



## Farmers market bag set

Every conference delegate receives a practical, stylish 'Start life with a midwife' 5-piece farmers market bag set, an eco friendly option for all your shopping needs.

### THE SET CONSISTS OF:

- Canvas tote bag branded with 'Start life with a midwife' has roomy sides and bottom gusset, which are designed to expand to fit all your shopping in. The bag includes six internal pockets with open bottoms to fit all your tall storage
- Medium sized mesh/canvas tote bag
- Three handy sized mesh produce bags





# Accommodation

*Christchurch has numerous accommodation options available. Below are a few hotel options, all within easy walking distance of the venue.*

## Novotel Christchurch Cathedral Square



### 52 CATHEDRAL SQUARE

- One minute walk to Te Pae Christchurch

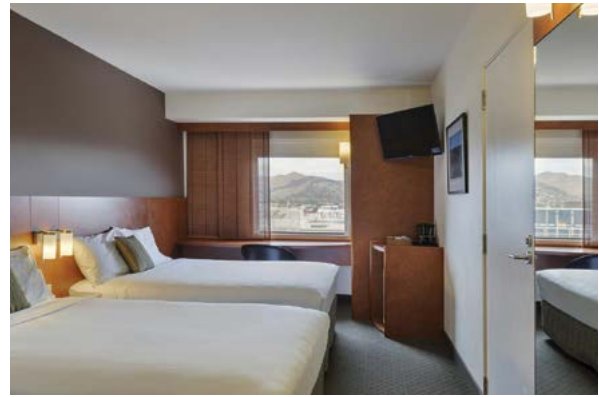
#### **Dynamic pricing, with 15% off best available rates.**

Novotel Christchurch is centrally located adjacent to the iconic inner-city square, with one minute walk to Te Pae Christchurch Convention Centre, and within easy walking distance to restaurants, cafes and shopping. All rooms are modern, spacious and provide plenty of space to work or relax, with the option of a king bed or two double beds.

With a stylish restaurant offering buffet breakfasts and à la carte meals, you can enjoy fresh local produce at Novotel. Paid car parking options are available on-site.

**Online booking:** [tinyurl.com/ACCORNZCOM21](https://tinyurl.com/ACCORNZCOM21)

## ibis Christchurch



### 107 HEREFORD STREET

- Five minute walk to Te Pae Christchurch

#### **Dynamic pricing, with 15% off best available rates.**

Vibrant economy hotel featuring contemporary rooms, Wi-Fi connectivity, coffee and tea facilities, paid onsite car parking options. Open restaurant offers continental breakfast buffet, with The Terrace and Riverside hospitality precinct within walking distance for lunch and dinner.

**Online booking:** [tinyurl.com/ACCORNZCOM21](https://tinyurl.com/ACCORNZCOM21)

**We recommend  
booking  
early to avoid  
disappointment**

# Accommodation

## COSA Hotel



### 840 COLOMBO STREET

- Eight minute walk to Te Pae Christchurch

**Studio room - \$155 | \$170** including one breakfast  
**Studio room - \$185** including two breakfasts

Newly opened hotel, where urban regeneration and innovation meets heritage and culture. All rooms are equipped with complimentary wifi, and all the comforts you'd expect in a new hotel.

#### Contact reservations to make a booking:

**T:** 0800 842 843

**E:** [reservations@thcgroup.co.nz](mailto:reservations@thcgroup.co.nz)

## BreakFree on Cashel



### 165 CASHEL STREET

- Eight minute walk to Te Pae Christchurch

**Dynamic pricing, with 15% off best available rates**  
 (up to 14 days prior to the conference starting).

Non-traditional hotel, with cozy yet stylish small rooms have effectively designed, featuring comfy beds, modular bathrooms, fun furniture, work spaces and blue lights under the bed, along with mood lighting in the bathroom.

**Online booking:** [www.breakfree.com.au/on-cashel](http://www.breakfree.com.au/on-cashel)  
 Promo code: NZCOM21

## Ashford Motor Lodge

### 35 PAPANUI ROAD

- Five minute drive or twenty minute walk to Te Pae Christchurch

**Superior studio or One bedroom suites - \$135.00**  
**Two bedroom suites - \$185.00**

The Ashford Motor Lodge is known for its friendly service and great value. The accommodation rate includes free unlimited wifi and free parking.

#### Online booking:

**W:** [ashfordmotorlodge.co.nz](http://ashfordmotorlodge.co.nz) **T:** 03 355 3416



- Prices quoted are GST inclusive, are per room/per night, and do not include breakfast.
- Check the terms and conditions for each accommodation provider, as some rooms are pre-paid and non-refundable at the time of booking.
- All rooms and rates quoted are subject to availability.

# Registration Fees



Prior to  
Friday  
17 September

Standard from  
Saturday  
18 September

## FULL CONFERENCE REGISTRATION *including welcome function ticket*

New Zealand College of Midwives Member	\$595.00	\$695.00
Non Member	\$695.00	\$795.00
Bachelor of Midwifery Student, Consumer	\$245.00	\$345.00

## ONE DAY REGISTRATION

New Zealand College of Midwives Member	\$320.00	\$350.00
Non Member	\$365.00	\$395.00
Bachelor of Midwifery Student, Consumer	\$205.00	\$220.00



### INSTALMENT PAYMENT PLAN REGISTER BY 20 JULY

We are offering an optional instalment plan for registration fees. This allows you to pay off your Early Bird registration over a 4 month period, at no additional cost.

You must register **online** by **20 July**, and **select the instalment option**.

*Book now, don't miss out! Register online at*  
[midwife.org.nz/conference-2021](https://midwife.org.nz/conference-2021)

### Notes:

NZCOM membership number must be provided on the registration form to receive the NZCOM member fee.

All registrations and social tickets must be accompanied by full payment.

If full payment is not received by 17 September 2021, your registration fee will be automatically changed to the standard fee.

Your credit card statement will show the payment by Composition Ltd (who process the registration fees).

All prices are in New Zealand dollars and include GST of 15%

### Registration cancellation and refund policy:

We understand that circumstances can change. At any point prior to the Conference you are welcome to contact us in writing ([nzcom@composition.co.nz](mailto:nzcom@composition.co.nz)) to nominate a replacement delegate at no extra charge. A full refund less a \$100 service fee will be issued for cancellations received on or before 01 October 2021.

No refunds will be issued after 01 October 2021.

Non-payment does not constitute cancellation.

If you are not permitted into the region due to restrictions around changes in government alert

levels, providing the Conference is proceeding in person, you will be provided a refund, less costs already incurred, and have the ability to view presentations on-demand.

No refunds will be provided for any cancelled accommodation, airfares or other related expenses for your travel to the Conference.

### Insurance

It is strongly recommended and your responsibility to have insurance to cover medical, travel, and registration expenses in the event of unforeseen circumstances.



# Frequently Asked Questions

## Where is the Conference being held?

Te Pae Christchurch Convention Centre

## What is included in the full registration fee?

Attendance to all plenary and concurrent sessions, daily catering (morning tea, lunch and afternoon tea), ticket to Welcome Function, satchel and contents, admission to exhibition and did we mention the networking and learning from other midwives. Dinner tickets are an additional purchase.

## How do I pay for my registration fee?

You can pay by credit card (Mastercard or Visa).

## Can I pay in instalments?

Yes, you are welcome to pay by instalments, over a 4 month period. You must register online by 20 July, and select the instalment option. Your credit card then will be debited ¼ of your Early Bird registration fee on the following months.

## Is there any financial assistance available?

We suggest you contact your regional NZCOM representative to ask if they have any specific funding available for the conference.

## Do you cater for special diets?

The venue caters for special dietary requirements. Please ensure when you register that you note your requirements in the special dietary requirements box.

## How do I change or add to my concurrent session selection?

Once your registration is complete you will be sent a link to your registration which you can modify and change sessions leading up to the conference. Otherwise, there is a modify your registration link on the registration page, you will require your email address and reference number.

## Can I purchase extra tickets for the conference social programme?

Yes, just select the number of tickets you require when you are completing your registration or if you decide to add some in at a later date you can go back into your registration and modify it.

## How will I know I'm registered?

You will receive an email (to the email address you provided) saying you are registered and a link back to your registration details.

## How do I get a tax receipt?

At the end of the registration process you can print or email yourself a copy of your tax receipt for your records.

## Do I need to book my own accommodation?

Yes, all accommodation requirements are to be booked by the delegates themselves.

## Are there any midwives who would like to share accommodation with me, or house me during the conference?

The best way to find out, is to make contact via your local regional chair, to see if there is someone they are aware of or place a message on the conference Facebook page.

## Can babies / children attend the conference?

Yes, a parents room will be provided, which allows a private area within the conference looking after your baby or child. This room will have changing facilities and some toys. Parents will need to supervise their babies / children during the conference and while using this room.

## What is the dress code for the conference?

Dress comfortably and wear shoes that are good for walking. Due to the size of the conference, the rooms are usually quite spread out.

## Will I be able to credit this towards my recertification programme?

Yes, attendance provides 16 hours of continuing midwifery education.



# General Information

## REGISTRATION DESK

The Registration Desk, located in the foyer area of the Te Pae Christchurch Convention Centre, will be open at the following times to collect your namebadge and registration pack:

Thursday 04 November 2.00pm – 7.30pm

Friday 05 November 7.00am – 5.00pm

Saturday 06 November 8.00am – 5.00pm

## CONTACT US

If you have any queries about the conference or your registration, please do not hesitate to contact the conference managers:

## ARNA WAHL DAVIES / NERIDA RAMSAY

Composition

PO Box 30035

Barrington, Christchurch

**T:** +64 3 332 4537

**E:** nzcom@composition.co.nz

**composition.co.nz**

**Composition**  
professional conference organisers

## PROGRAMME COMMITTEE

- Rea Daellenbach
- Lesley Dixon
- Davina Geddes
- Liz James
- Mary Kensington
- Julie Richards

## NZCOM LIAISON

- Lesley Dixon
- Kate Clark



Hosted by  
*Canterbury /  
West Coast region  
of the New Zealand  
College of Midwives*



# Sponsors

The New Zealand College of Midwives would like to extend their gratitude to the following organisations for their contributions to NZCOM 16th Biennial National Conference:

## MAJOR SPONSOR



## SUPPORTING SPONSORS



## ORGANISATIONS CURRENTLY EXHIBITING AT THE CONFERENCE:

ACC, Aspen Healthcare, Bayer, Better Back NZ, Bio Oil, Calmbirth, Cleft New Zealand, Continence NZ, Expect Maternity, Fisher & Paykel Healthcare, Home Birth Aotearoa, I BLCE, IMAC, LLLNZ, MERAS, Midwifery Council of New Zealand, Midwifery Resource Centre, MMPO, New Zealand College of Midwives, NZ Breastfeeding Alliance, Parents Centre NZ Inc, Perinatal Anxiety & Depression Aotearoa, Rural Midwifery Recruitment, Smart Start (DIA), Toomac Solutions, Tui Balms, WaterWipes, Wilson Consumer, Women Health Action